

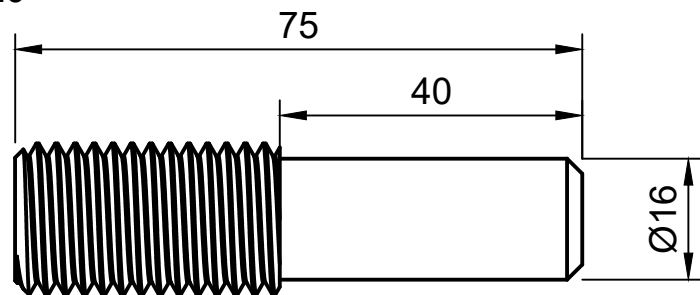
2-3-6 sous-ensemble rigide

| Parts List | | |
|------------|-----|-----------------------------|
| Item | Qty | Part Number |
| 1 | 1 | M20 tige filetée 1078N73 |
| 2 | 1 | Ecrou M20 90591A230 |
| 3 | 1 | Plaque |
| 4 | 1 | Canon M6 |
| 5 | 1 | M6 96144A120 |
| 6 | 3 | M2.5x10 91294A018 |

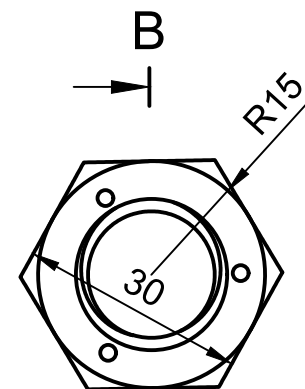
Vis à usiner

| | | | | |
|-------|---------------------|---|-----------------|--|
| Dept. | Technical reference | Created by Patrick Leclere 15/07/2019 | Approved by | |
| | | Document type | Document status | |
| | | Title Mandrin M20 | DWG No. | |
| Rev. | Date of issue | Sheet 1/2 | | |

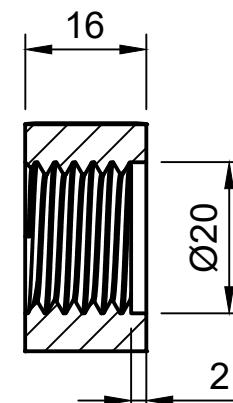
Mandrin M20



Ecrou M20

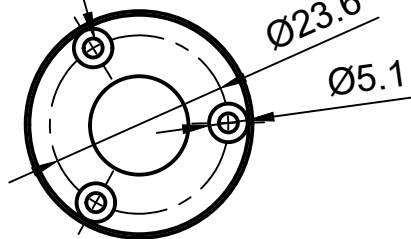
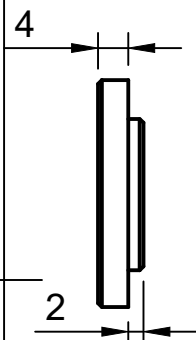


B-B (1:1)

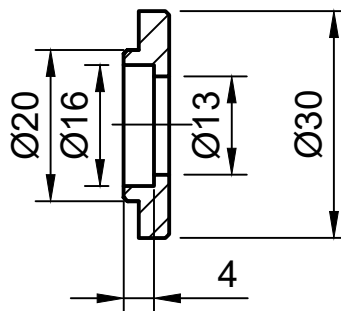


M2.5

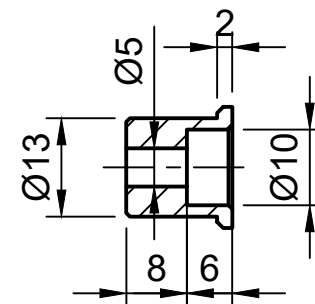
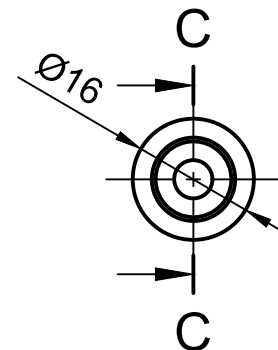
A



A-A (1:1)

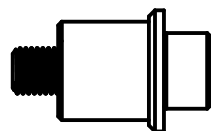


C-C (1:1)



Plaque avant à souder sur l'écrou

Exemple de canon pour vis CHC M6 perçage à D=5mm et filetage



| | | | | |
|-------|---------------------|---|-----------------|--|
| Dept. | Technical reference | Created by Patrick Leclere 15/07/2019 | Approved by | |
| | | Document type | Document status | |
| | | Title Mandrin M20 | DWG No. | |
| Rev. | Date of issue | Sheet 2/2 | | |